

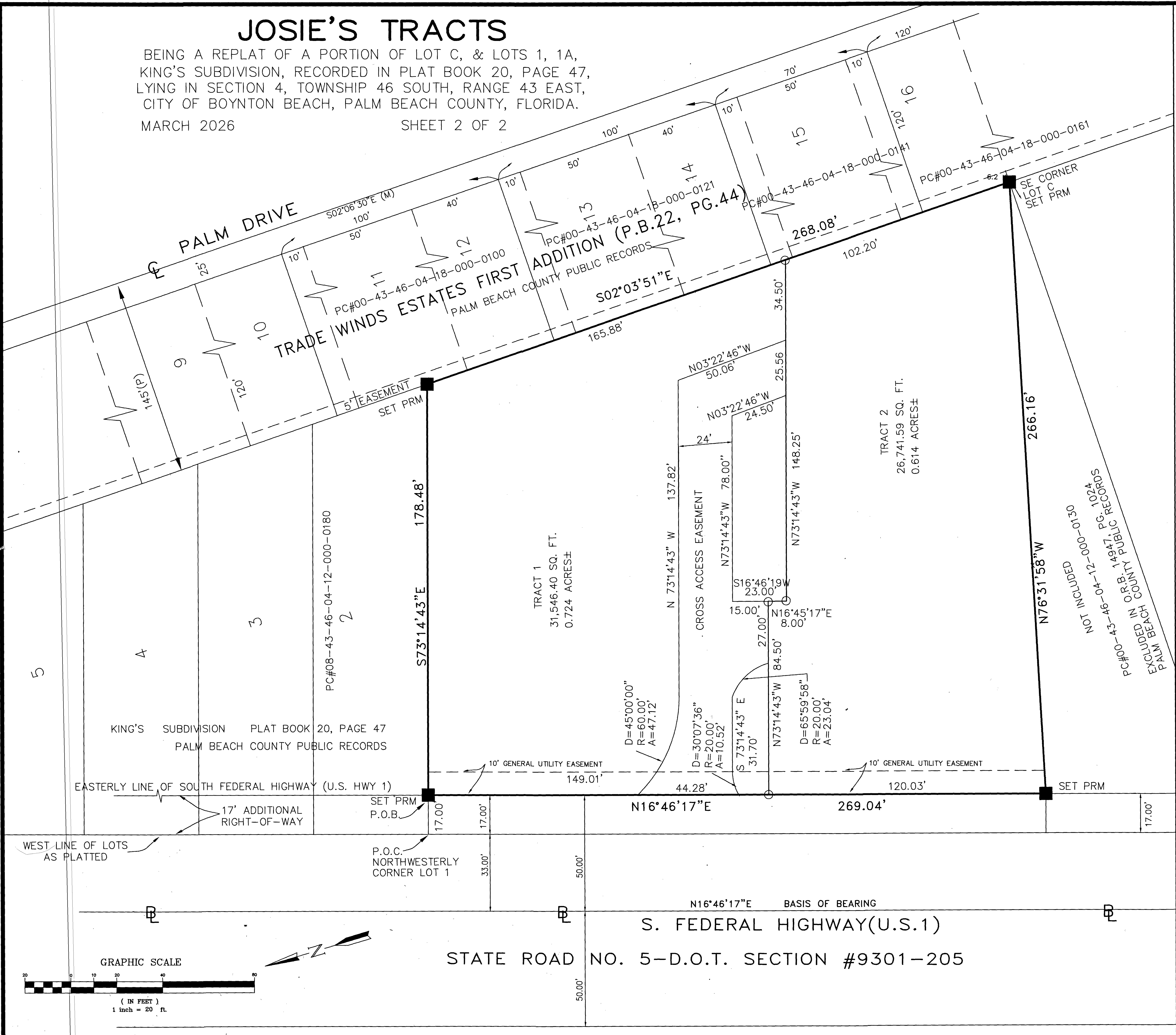
# JOSIE'S TRACTS

BEING A REPLAT OF A PORTION OF LOT C, & LOTS 1, 1A,  
KING'S SUBDIVISION, RECORDED IN PLAT BOOK 20, PAGE 47,  
LYING IN SECTION 4, TOWNSHIP 46 SOUTH, RANGE 43 EAST,  
CITY OF BOYNTON BEACH, PALM BEACH COUNTY, FLORIDA.

MARCH 2026 SHEET 2 OF 2

# 35

SHEET 2 OF 2

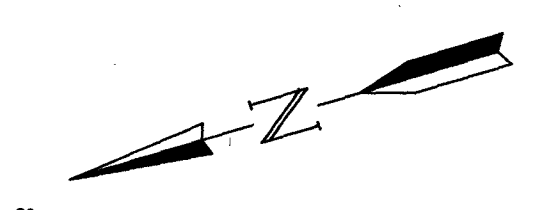
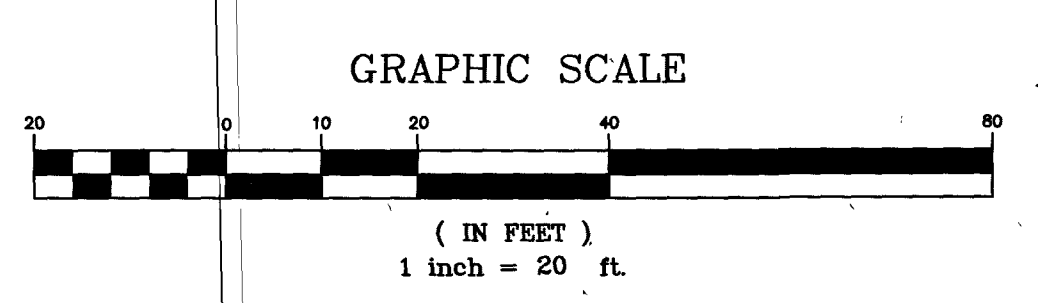


TABULAR DATA

TRACT 1	31,546.40 SQ. FT.	0.724 ACRE
TRACT 2	26,741.59 SQ. FT.	0.614 ACRE
TOTAL	58,287.99 SQ. FT.	1.338 ACRES

- Legend
- Indicates Set 5/8" Diameter X 18" length Iron Rod & Cap #LB6936 to be set Prior to sale of lot
  - P.R.M. ■ Indicates Set Permanent Reference Monument 4" x 4" x 24" Concrete Monument, Stamped PRM LB#6936
  - P.B. Indicates Plat Book
  - O.R.B. Indicates Official Record Book
  - PG. Indicates Page
  - FND. Indicates Found
  - R/W Indicates Right Of Way
  - Ⓢ Indicates Baseline Of R/W Map
  - Ⓢ Indicates Centerline
  - P.O.C. Indicates Point of Commencing
  - P.O.B. Indicates Point of Beginning
  - P.S.M. Indicates Professional Surveyor & Mapper
  - L.B. Indicates Licensed Business
  - P.C.# Indicates Property Control Number
  - SQ. FT. Indicates Square Feet

THIS INSTRUMENT WAS PREPARED BY RICHARD N. DEAN, P.S.M.  
#4406 IN THE OFFICE OF DEAN SURVEYING & MAPPING, INC.,  
LB#6936 4201 WESTGATE AVENUE, SUITE A3, WEST PALM BEACH,  
FL. 33409



Dean Surveying & Mapping, Inc.  
The Measuring Line Shall Go Forth Jer. 31:39  
4201 Westgate Avenue, Suite A-3  
West Palm Beach, Florida 33409  
Tel: (561)625-8748

DRAWN: M.R.	DATE: 1-29-26
SHEET: 2 of 2	SCALE: 1"=20'
	JOB No.024-803-PLAT